

SPITFIRE

MODEL KIT 1727

The Spitfire was one of Great Britain's famous fighters during World War II. Its fame was gained during the Battle of Britain. Its maximum speed was 408 m.p.h. at 25,000 feet.

JUST FOLLOW THE EASY STEPS, YOU DON'T NEED CEMENT ON THIS SNAPTITE MODEL.



WHILE THIS IS A SNAP TOGETHER KIT AND NEEDS NO CEMENTING, THERE'S NO REASON WHY YOU CAN'T USE CEMENT TO JOIN THE PARTS FOR A STRONGER MODEL.

If you have any questions or comments, call our hotline at: **(800) 833-3570**
or, please write to:

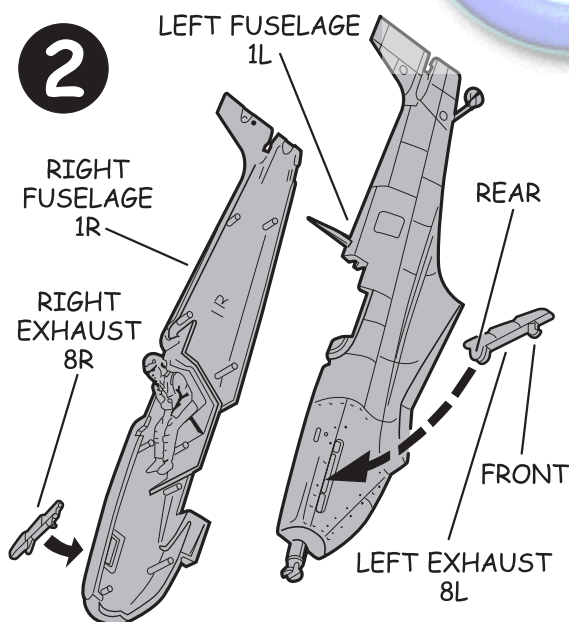
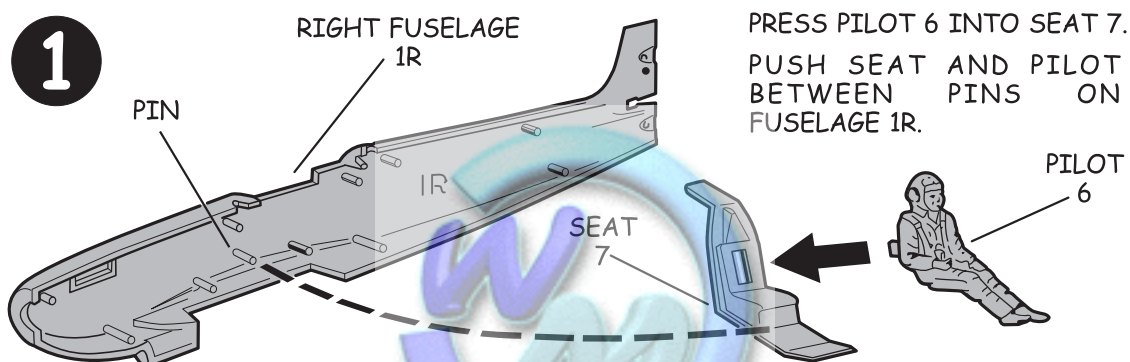
Revell-Monogram Consumer Service Department, 725 Landwehr Road, Northbrook, Illinois 60062

Be sure to include the plan number (85172700200), part number, description, your return address and phone number.

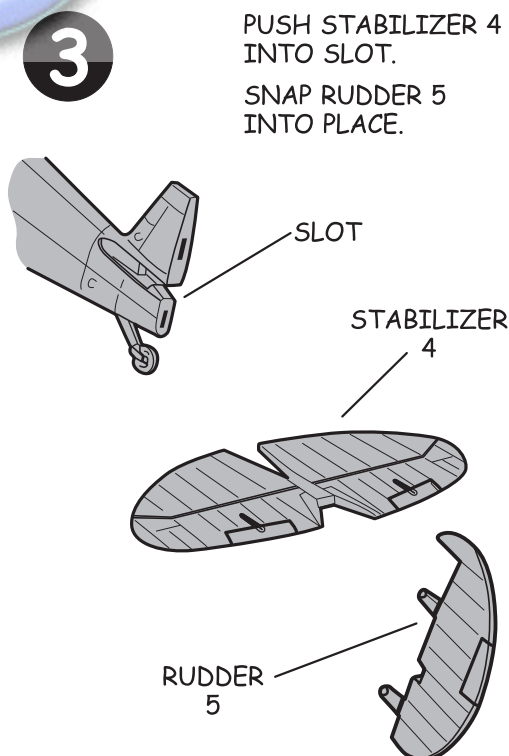
Visit our website: www.revellmonogram.com

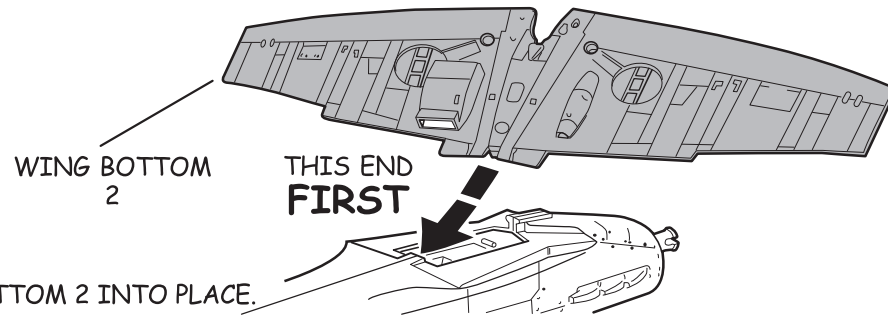
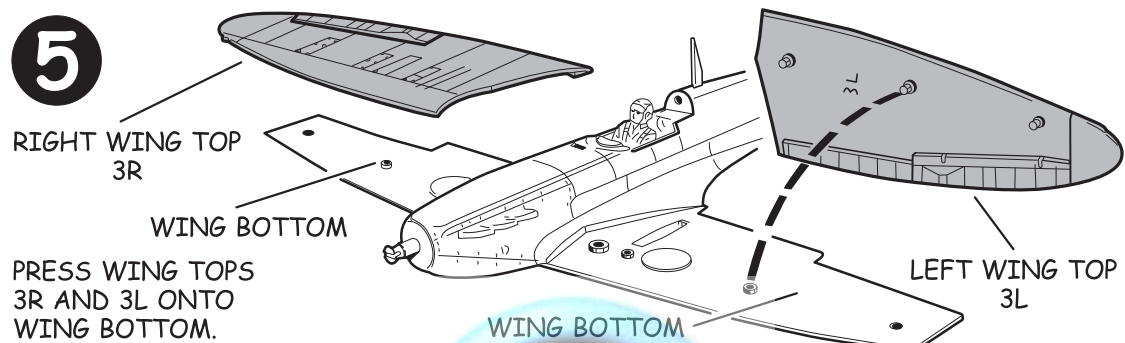
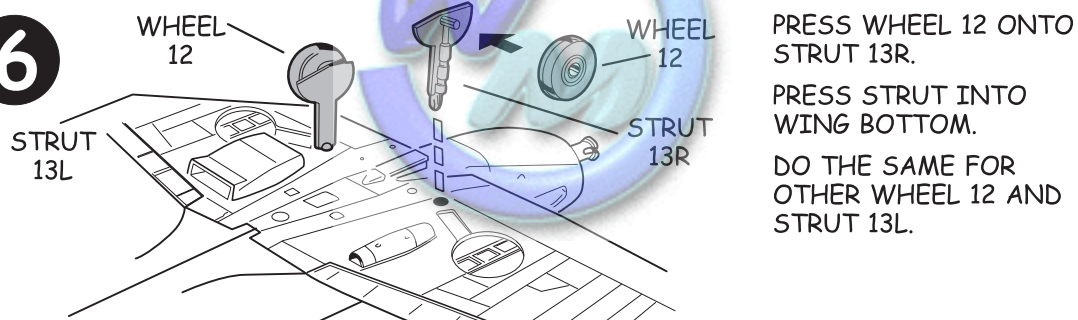
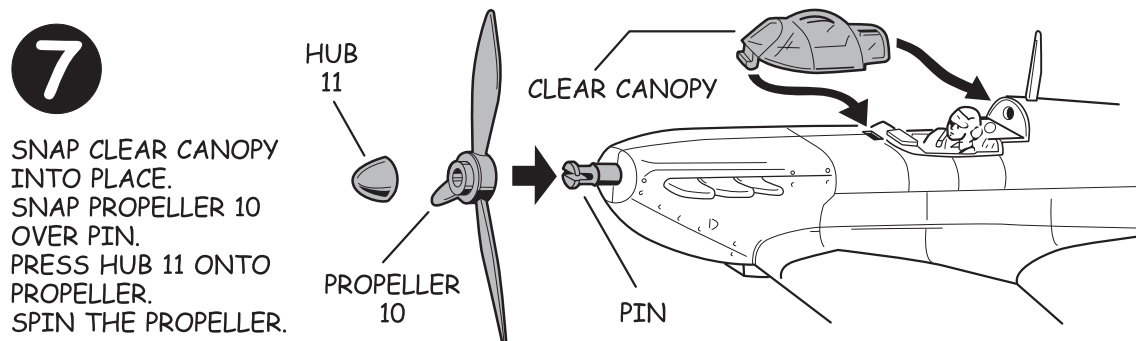
REVELL-MONOGRAM, LLC Northbrook, IL. Copyright © 2006. All rights reserved.

85172700200



SNAP FUSELAGE 1R AND 1L TOGETHER.
SNAP EXHAUSTS 8R AND 8L INTO FUSELAGE - PUT REAR END IN FIRST, THEN PRESS FRONT END IN PLACE.



4**5****6****7**

MARKINGS: APPLY SELF-STICK DECALS TO MODEL AS SHOWN ON THE BOX TOP.